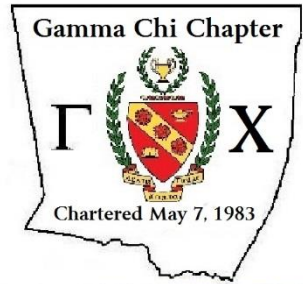


Gamma Chi Newsletter

The Delta Kappa Gamma Society International
Eta State, North Carolina
Region III, Warren County



Volume XXIV, Issue 2

November/December/January 2018-2019



MESSAGE FROM THE PRESIDENT

Happy Holidays Gamma Chi Sisters!

Fall is upon us, and Thanksgiving is arriving soon. Please know that I include all my sisters in the list of people I am fortunate to know and grateful to have in my life when I think of counting my many Thanksgiving blessings this year in particular.

Two weeks after Thanksgiving will be our December meeting. Terry Anne Denny, Region III Director, will be our guest speaker for the evening. Nancy Tunstall and I had the opportunity to meet and get to know her at the Eta State NC Executive Board Meeting at Elon in October. She is delightful and will have much to share with us all.

Many thanks to Norma, her committee, and other members who prepared and delivered goodie bags to our new teachers in Warren County Schools. Thank you to all for bringing or sending items for those bags to the October meeting. We may never know the full impact and support the bags bring to those teachers and the students in their classrooms, but I know they made a difference because of your time and generosity.

As you prepare for a season of giving and receiving, please consider a donation to our Scholarship Fund in honor or memory of someone special to you. Loree will also be collecting contributions to the World Fellowship Fund.

Finally, remember to take time for yourself in the coming weeks of hurried activity. Soak in a bubble bath, schedule that mani/pedi and/or massage, enjoy some dark chocolate, or binge watch your favorite shows—you are worth it!

Our December meeting is sure to be a festive time and a great way to continue the joy of the holiday season. I look forward to seeing all of you on December 6 at Norlina United Methodist Church. Don't forget to wear your name badge to get points on your Member Excellence form.

Until then, **Keep SPARKLING!**

In sisterhood,

Evelyn Hall

Evelyn Hall

elhall@embarqmail.com / 252-432-6462 (c)



INSIDE CONTENTS

Gamma Chi News.....	2-6
Eta State NC and DKG News News.....	3-6
Mystery Member	5
Tech Tip	5-6
Visions/Themes/Websites	6
Dates to Remember (International, Eta State NC, Gamma Chi)	6
Gamma Chi Chapter October Minutes	7
Adjusted Gamma Chi Budgets	8-9
Scholarship & Grant-in-Aid Contribution Form.....	10
THAT Volunteer Hours Form.....	11
Member Prospect Cards	12
Gamma Chi Chapter Scholarship Application Form	13-14
Gamma Chi Chapter Grant-in-Aid Application Form	15-16
Warren County Department of Social Services Angel Tree	17

MEETING NOTICE

Thursday, December 6, 2018

Norlina United Methodist Church

5:45 p.m. Gathering

6:00 p.m. Dinner

6:30 p.m. Program featuring

Eta State NC Region III Regional Director Terry Denny

6:45 p.m. Business Meeting

Cost: \$15.00 (make check payable to Michelle Tielking)

Cut-Off Date: **Saturday, December 1st**

Please respond to your Evite as soon

as possible and no later than December 1!

(Norlina Group will need to bring items for the raffle.)

BRING TO THE MEETING:

- ☞ Children's book(s) to donate to the "Reach Out and Read" program at Warren County Health Department
- ☞ Money to buy \$1 raffle tickets (proceeds aid local libraries and NC DKG Educational Foundation)
- ☞ Scholarship Fund contribution; if unable to attend, make check payable to Gamma Chi and send it to Shirley White, 1957 US Hwy 1 N, Norlina, NC 27563 (form is at the end of the newsletter and on our [website](#))
- ☞ World Fellowship contribution (\$3 recommended)
- ☞ Box Tops for Education (to aid middle school and elementary schools in Warren County)
- ☞ THAT Gamma Chi Yearly Volunteer Hours Early-Career Teachers Form (found at the end of the newsletter and on our [website](#))
- ☞ Voluntary donation, if desired; see page 17

AT THE END OF THE NEWSLETTER PLEASE FIND THE FOLLOWING FORMS:

Gamma Chi Chapter Scholarship & Grant-in-Aid Contribution Form

Print and use as many forms as necessary for the honorarium(s) and/or memorial(s) you wish to make.

THAT (Teachers Helping Another Teacher) Form

List all volunteer hours (don't forget the time spent obtaining items for the New Teachers Bag).

Member Prospect Cards

May be turned in at any meeting.

Gamma Chi Chapter Scholarship Application Form

For our members attending graduate school. Due to Scholarship Chair [Betsy Clark](#) by January 18, 2019.

Gamma Chi Chapter Grant-in-Aid Application Form

Please encourage a female who is graduating high school, an enrolled college student, or a non-certified employee of Warren County Schools desiring or working toward a degree in education to apply; also due to [Betsy Clark](#) by January 18, 2019.

MEET OUR NEW MEMBERS

Although we are saddened by the dissolution of our mother chapter, Xi, we rejoice in the transfer of two of their members to our chapter. Listed below are pictures of our new members and their professional background along with their groups and birthdays so you can start to familiarize yourselves with our new members and bid them welcome! For more information about them, check out their biographical sketches found [here](#).



Linda Hall is a retired Office Systems Technology Program Head at Vance-Granville Community College. She will be a member of the St. Paul's group. Her birthday is June 1.



Vivien Windley is a retired Curriculum Specialist with Vance County Schools. She will be a member of the St. Paul's group. Her birthday is June 14.

MEET OUR REGIONAL DIRECTOR

Our guest for this meeting is 2018-2020 Region III Director **Terry Anne Denny**. Terry is a member of the Alpha Omicron Chapter in Wake County. As Region III Director, Terry serves as the liaison between the ten chapters in Warren, Franklin, Wake and Johnston Counties and the Eta State NC leadership.



Terry Denny

Terry lives in Garner with her husband, where she has just retired after 32 years in Wake County as an elementary music teacher, including 21 years at Lacy Elementary School. She currently serves as secretary of the NC Fossil Club and volunteers at the NC Museum of Natural Sciences in the paleontology collections, after working part time there in Special Exhibits for 10 years. She is also very active in her church music ministry where she plays handbells and sings in two choral groups. She has served Alpha Omicron as president and is presently corresponding secretary. Terry finds the "interactions with colleagues in my chapter and across NC" as the best part of DKG.


BIRTHDAY PRESENTS


Members with November, December or January birthdays who attend the meeting will be recognized and will receive a present.

Don't miss your birthday meeting!!!




CONGRATULATIONS TO:


 **Kristen Boyd** on being selected by *The Daily Dispatch* as one of the 15 emerging leaders age 40 and younger in Vance County for 2018-2019.


 **Jill Coleman** on the birth of her granddaughter, Lucy Rivers Stall, to daughter Morgan Leigh and husband, Allen. Lucy Rivers was born on August 10 weighing 8 lbs. 1 oz. and was 20 inches long. She has a brother, Whit.




 **Maryanne Edwards** and her husband Chad on the birth of their son, Wyatt Samuel Edwards. Wyatt was born on September 23 weighing 7 lbs. 13 oz. and was 19 inches long.



 **Loree Harris** on the birth of her grandson, Jack Harris Dodson, to daughter Kate and husband, Robbie. Jack Harris was born August 20 weighing 8 lbs. 11 oz. and was 22 inches long. He has a sister, Reagan.

 **Norma Retzlaff** on her son Bradley's promotion to global partner. He works for Ernst and Young, a UK based professional services firm, and it is one of the "Big Four" accounting firms. Bradley is one of the 747 global partners named this year, and he and his wife Sandy (**Ginny Bernard's** daughter) recently returned from Shanghai, China, where he participated in the 2018 global partners meetings.

 **Erin Simons Riggan** on her marriage to Ryan Riggan on November 3rd at Lake O' the Woods.



CONDOLENCES TO:



Our Deepest Sympathy

Diana Bobbitt on the loss of her brother, Henry "Hank" Dallas Bobbitt III, **Brooke Callahan** on the loss of her father, Cameron "Cam" Comer and **Sheila Robertson** on the loss of her father, Fred Hunter Powell, Sr. Please keep Diana, Brooke, Sheila, and their families in your thoughts and prayers.

TREASURER'S REPORT

by Shirley White, Treasurer



At the October meeting, \$50.00 was collected from the meeting raffle; this will be used to help our local libraries and the NC DKG Educational Foundation. Other monies received were: \$435.00 for meals, \$160.00 for the New Teacher Bag Project, \$72.00 for the afghan raffle and \$65.00 for International and state funds.

At the meeting, dues were collected from 31 members amounting to \$2,670.00. Thank you, Gamma Chi Sisters, for paying your dues in a timely, fashion, which enabled me to promptly submit the Report of Dues and Fees to our Eta State NC Treasurer.

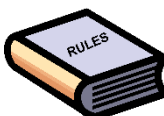
At the present, we have forty-eight active and ten reserve members for a total of fifty-eight members. The budgets have been adjusted to reflect these numbers.

At the December meeting, when paying by check, please write **separate checks** with the **correct amount** for the meal, scholarship donations, etc. It will make the bookkeeping so much easier!



CHAPTER RULES REPORT

by Diane Colin, Chapter Rules Chair



DKG International made extensive changes to the International Constitution this summer at the DKG International Convention. These changes went into effect immediately after the convention. How they affect state organizations and chapters can be seen

in three documents on the DKG's website by clicking [here](#) (you must be signed in to access them).

These changes have been incorporated into our chapter rules which are attached to the email containing the newsletter. Red strike-out indicates deletions and red print indicates additions.

Two major changes are the classification of collegiate members (which we will probably never have since we are not near a four year institution) and the change in when dues are due (June 30 instead of October 31). The last one is huge! If we still induct members in May, we will have to charge them at least \$20.00 (pro-rated international dues) and then turn right around and collect \$85.00 for the next year (July 1-June 30) plus \$10.00 for the induction fee for a total of \$115.00 plus their pin and ribbon. We can avoid this extra \$20.00 charge by moving induction from the May meeting until the fall meeting. If we change induction from the May meeting until the fall meeting, we will need to also change voting on new members from the March meeting until the May meeting. That will give us all summer to do orientation so we won't be so rushed as we are now.

Also the Chapter Rules Committee suggests that we move our October meeting to early September. Most chapters meet in September anyway. Our October meeting is a carry-over from when schools didn't start until after Labor Day and it seemed too rushed to meet in September. Now, year-round schools are tracked out during our October meeting and several members miss that meeting because of travel plans.

A minor change is the name of our Communications & Publicity Committee to Communications & Marketing Committee. Then our name will align with the name of the international committee.

You will need to read over our revised chapter rules very carefully in order to make an informed decision whether to ratify the changes at our December meeting.

HOSPITALITY AND SOCIAL AFFAIRS REPORT

by Paula Aycok, Hospitality and Social Affairs Chair



Meal costs are to be paid at each meeting upon arrival. Members who are unable to attend after responding "yes" to their invite must inform Communications & Publicity Chair Nancy Tunstall at nancytunstall@gmail.com or 252-456-2051 (h) by the cut-off date of **Saturday, December 1st**. When this is not done, members will be expected to pay for the meal. Please send your payment by an attending member or have a friend pay for your meal (she could get you a carry-out meal if so desired). **The money is needed the night of the meeting so the caterer can be paid in full.** Also, you are welcome to bring prospective members as guests, but you will be responsible for paying for their meals. Thank you in advance.

MEMBERSHIP COMMITTEE REPORT

by Mary Austell, Membership Chair

Please take a moment to look around at your school and observe the outstanding educators who have not been invited to join DKG. According to our Purpose 2, we are supposed "To honor women who have given or who evidence a potential for distinctive service in any field of education." One of the ways that we can carry out this purpose is to invite them to become members of the prestigious organization of The Delta Kappa Gamma Society International. According to our chapter rules, the requirement for active membership states, "An active member shares in financing chapter activities, participates in chapter programs and projects, contributes to committee work and may hold an office. An active member shall be a woman who is employed as a professional educator or who has retired from an

educational position." Member Prospect Cards are included at the end of this newsletter. Please fill out one or more cards and bring them with you to the meeting and turn them in to me. Cards may be turned in at any meeting.

Thanks to those who either turned in their biographical sketch or turned in their information for their bio sketch. The committee would like to encourage all members who have not done so, to please get that information to [Nancy Tunstall](#). *Hint: Receive 10 points on your Member Excellence Award form by turning it in by our 2nd meeting on December 6.*

SCHOLARSHIP COMMITTEE REPORT

by Betsy Clark, Scholarship Chair



Please take time to look at the **Dates to Remember** on page 6 to see the deadlines for various scholarships and grants. Also, if you know of a colleague or someone who is pursuing a degree in education, please tell her about our grant-in-aid for non-members.

This includes non-certified employees of Warren County Schools who may wish to begin an education degree program. Our committee will be meeting soon after the January 18 deadline to review applications for our Gamma Chi Scholarship(s) and Gamma Chi Grant(s)-in-Aid. At the December meeting, I will be glad to take any applications that you have finished.

At our December meeting, please remember to bring a contribution for our Scholarship Fund (could be an honorarium or memorial). Also, please see Danylu Hundley and pick up your afghan raffle tickets if you have not already done so. By being members of Delta Kappa Gamma, we are charged with carrying out Purpose 5: *To endow scholarships to aid outstanding women educators in pursuing graduate study and to grant fellowships (grants-in-aid) to non-member women educators.* Reminder: you can earn points on your Member Excellence form by contributing to our Scholarship Fund and/or applying for a scholarship.

WORLD FELLOWSHIP PROGRAM: IMPACTING EDUCATION WORLDWIDE

by Loree Harris, World Fellowship Representative



World Fellowship provides monetary awards to women from around the world to study in the United States and Canada. In the next week or two, International will be announcing the 2019-2020 World Fellowship recipients. Let's hope one of them will be attending a fine NC university.

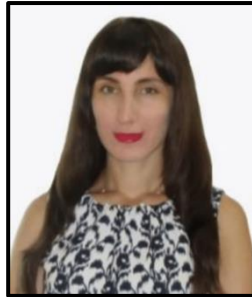
In an attempt to better acquaint you with World Fellowship recipients, the DKG World Fellowship Committee shared this excerpt from the personal narrative they received during the application process. Nargiza is a Fulbright scholar from Kazakhstan who came to the United States to study International Educational Management. Her dream is to open an educational agency in her home town back in Kazakhstan. She would like to create a computer program/website that would allow students to become more proficient in English.

Read in her own words about this technology that she wishes to support:

"I learned while working for a Taiwanese company that our world places a great importance upon technology. For that reason, I strongly endorse this online teaching platform. It provides so many practical advantages for just about every student. I strongly believe that this online platform should be used for audiences in Kazakhstan. It's already been tested on students in China and Taiwan, and we've found that they were

able to learn English whenever they chose and wherever they were at. All they needed was access to the Internet through a mobile phone or a tablet. Isn't that amazing?

It is also very convenient for teachers, too. In addition to teaching English, I am a young mom. If I didn't have this platform to work with during the hours that my baby is asleep, I really couldn't say when I would fit teaching into my schedule. Instead of wasting time in a daily commute to an office or classroom, I conveniently work from my laptop at home. This online teaching platform has become not only a necessity for me, but also for physically handicapped English teachers, for whom a commute would be a real struggle. With a laptop and home Wi-Fi, these teachers are able to earn a living online, sharing their linguistic knowledge in a way that would have been impossible before this platform was available. Think of it — with a single website dedicated to Kazakh teachers, we could bring in young moms, the mobility-challenged, and really just about anyone who wanted to teach English and earn extra money for their well-being."



Nargiza

(The part about Nargiza was taken from the *DKGSI Blog*, June 7, 2018.)

GAMMA CHI MEMBERS' ENTRIES ACCEPTED INTO THE DKG GALLERY OF FINE ARTS



Hay Day in Warren County

The Arts & Humanities Jury of The Delta Kappa Gamma Society International has accepted Aimee Anderson's entries of *Hay Day in Warren County* and *Small Piece of Heaven* and Nancy Tunstall's entry of *The Golden Pavilion* into the Fall 2018 DKG Gallery of Fine Arts, an online gallery of works of art and letters. The new Fall 2018 Gallery works will be available for viewing online in late November. Their work will stay up in the Gallery for six months, after which it will be archived.



Small Piece of Heaven

Aimee's and Nancy's entries are under the category Visual Arts, subcategory Photography. The judging criteria rubric looked at the theme, composition and technique of the entry.



The Golden Pavilion

The next submission window will begin on January 15, 2019, through February 15, 2019. Submission procedures and judging rubrics may be found by clicking [here](#) (you must be logged into the DKG website to view this page). There are many categories and subcategories. Start preparing your entry now!

CHAPTER ACHIEVEMENT: HOW ARE WE DOING?

The Chapter Achievement Awards are presented to chapters annually at the Eta State NC Convention. This initiative provides for acknowledgment, recognition, and appreciation in a tangible way for those chapters who meet the criteria at various levels of achievement. In 2013, 2014, 2015, 2017 and 2018 Gamma Chi was recognized at the highest level—Superior. Not only that, but we also received the Presidential Chapter Achievement Award by being among the top five Superior level chapters in the state. In 2016 we dropped back one level to Excellent due to a change in the form requiring 100 points more to reach the Superior level. We got back on track in 2017 and 2018. Reaching the Superior level requirement of 600+ points is not enough to ensure us of receiving the Presidential Award. Last year twelve chapters reached the superior level, but only the five chapters having the most points received the Presidential Award. We are pretty sure of reaching 600 points, but that may not be enough to reach the Presidential Award status. How can we generate more points?



First, you need to look at the Chapter Achievement form to see what you may be able to do to help. To see the new Chapter Achievement form for 2018-2019, click [here](#). Here are a few things that would help (please notify Nancy Tunstall if you accomplish any of the things listed):

- Help get a former member to reinstate their membership.
- Submit applications for DKG and State Scholarships and/or Professional Development Grants; check **Dates to Remember** on page 6 in the newsletter for deadlines and links to applications,
- Contribute to various DKG and State funds; look at your Member Excellence form for more information about the various fund or click [here](#) to see the form,
- Communicate with state/local officials (must have examples)
- Submit an entry to an educational website or professional journal, and/or
- Submit an entry to the *DKG Bulletin – Journal* or *DKG Bulletin – Collegial Exchange Magazine*.

Sincere thanks goes out to some of our members who have already helped to add to our point count. They include:

- Treasurer's duties – Shirley White (15 points)
- Communications & Publicity Committee duties – (90 points)
- President's duties – Debra Clayton (15 points)
- Rules Committee – (5 points)
- Membership Committee – (30 points)
- Chapter Leader Training – Evelyn Hall, Betsy Clark, Mary Austell and Shirley White (20 points)
- President's Duties – Evelyn Hall (5 points)
- Serving on a state committee – Ashley Barnette and Debra Clayton (10 points)
- DKG Gallery of Fine Arts – Aimee Anderson and Nancy Tunstall (10 points)
- Gamma Chi Strategic Plan – Planning Committee (10 points)
- Gamma Chi History – Mary Catherine Harris (10 points)
- Convention Attendance – Aimee Anderson, Ashley Barnette, Debra Clayton, Evelyn Hall, Nancy Tunstall and Shirley White (40 points)

- Convention Presenters – Debra Clayton and Ashley Barnette (20 points)
- Participated in Convention Chorus – Debra Clayton and Shirley White (10 points)
- Attended Leadership Management Seminar – Evelyn Hall (5 points)
- Golden Key Nominee – Mary Catherine Harris (5 points)
- Rising Star Nominee – Evelyn Hall (5 points)

Please consider what you can do to help increase our point total. Let's all pull together to make sure our "SUPER-CHAPTER" continues to be recognized at the highest level!

BREAKOUT SESSION PRESENTERS NEEDED

Have you been involved in an educational endeavor worthy of sharing? Are you looking for the right setting to share your professional insights? Do you have a personal interest that others may enjoy learning more about? If so, the Eta State NC Convention is the place for you.

One-hour sessions will be presented Saturday afternoon, May 4. The strands of focus are *DKG Society Business, Personal Growth, and Professional Growth*. Deadline for submissions is January 26, 2019.

Session proposal forms are posted online at: <https://www.ncdkg.org/forms.html>

Return to Dr. Teresa Cowan at the address on the form.



TWO ETA STATE NC SCHOLARSHIPS AVAILABLE THIS YEAR

The Eta State NC Scholarship Committee is pleased to announce that there will be two scholarships available this year as specified by the Eta State NC Finance Committee.

The Doctoral Scholarship will be available for \$4,000 and a Master's Scholarship available for \$1,000. There will not be a special project scholarship issued this year.

Click <https://www.ncdkg.org/forms.html> for the applications, checklist and reference forms. The deadline for submission is February 1, 2019.

If you have questions, please contact Michelle Benigno, Eta State NC Scholarship Chair, at mtbteacher@gmail.com.

NOMINATE MEMBERS FOR RECOGNITION AT THE BIRTHDAY CELEBRATION



Eta State NC will observe its 85th Birthday at the 2019 Convention. One way that state leaders plan to celebrate is to recognize members who have made notable contributions to education or to DKG on the local, state and national levels.

President Connie explained, "Please review your chapter histories and membership records to locate those in your chapter who have made significant contributions and impacted numerous lives. Think outside the box and determine members in your chapter, past or present, that might deserve recognition."

A Google form has been set up to collect chapter nominees at <https://goo.gl/forms/ozSOMHGoZGad73gN2>. The form includes a space for a short biography and a photograph.



Let's SPARKLE!

GOALS:

- Encourage **S**avvy leadership
- Inspire **P**assionate, meaningful programs and projects
- Analyze and **A**rticulate current educational issues
- Further **R**espect for diversity in membership
- Promote **K**nowledge through lifelong learning
- Establish and **L**aunch a member wellness initiative
- Advocate **E**xcellence in education

Did you know that International has an Emergency Fund? Members who sustain major losses from floods, tornadoes, hurricanes, earthquakes, wild fires and other natural disasters can be recommended by their chapter and state organization presidents to receive a \$500 Emergency Fund Award. Twelve Eta State NC members have applied to receive money from International as of now and as state president, it is my responsibility to submit the forms to International.

How can you assist these members who have sustained damage? You can donate to the DKG Emergency Fund. Donations are tax deductible and can be made online through the DKG website at <http://www.dkg.org/> or by mailing a check to Phyllis Hickey at Headquarters, 416 W 12th St, Austin, TX 78701. Make the checks payable to DKG Emergency Fund.

Connie

Connie Phifer Savell
Eta State NC President
2017-2019

MYSTERY MEMBER

by Nancy Tunstall, Editor



Here is the hint for this newsletter's mystery member. *She hails from New York. She began her teaching career out of the country in an area that desperately needed her expertise. After returning to the United States, she taught math and received the Sue Lehmann Award for Excellence in Teaching. Later she received a full scholarship from NELA to complete her master's degree. She is now a principal. Who is she?*

If you do not know who the member is, you can find the answer by reading our members' biographies by clicking [here](#). The name of our mystery member will be revealed at the meeting.

TECH TIP—A GRAPHIC CONVEYS A THOUSAND WORDS... SO CREATE ONE!

Create a design THIS IS A SCREENSHOT FROM THE CANVA WEBSITE

Card

Invitation (Portrait)

Business Card

Flyer

Many times a DKG member who is working on a project of some sort needs something to make it stand out. She checks clip art and photos online, but nothing seems just right. There is an easy way to make an original graphic that will make your project pop! Just use Canva found at <https://www.canva.com/>.

Canva is a free graphic-design tool website, founded in 2012. It has an easy to use drag-and-drop interface and provides access to over a million photographs, graphics, and fonts. It is used by non-designers as well as professionals. The tools can be used for both web and print media design and graphics. (Canva - Wikipedia <https://en.wikipedia.org/wiki/Canva>)

Both free and paid versions are available. For most DKG members, the free version is more than sufficient. Any graphic that is created is saved and can be reworked.

Canva has many strong points, but one does stand out. Every time you need a graphic, you probably need a special size. For example presentations (PowerPoint) need a 1920 px by 1080 px, while a Facebook cover is 828 px by 315 px. These are only two examples of the many templates available.

You can upload your own photos or special icons or use one of the many free ones.

(Taken from *DKGSI Blog*, August 6, 2017)

DKG MISSION STATEMENT

The Delta Kappa Gamma Society International promotes professional and personal growth of women educators and excellence in education

2018-2020 INTERNATIONAL THEME

DKG: Leading Women Educators Impacting Education Worldwide

2017-2019 ETA STATE NC THEME

"Let's SPARKLE!"

2018-2020 GAMMA CHI THEME

"Let's SPARKLE—From the Inside Out!"

DATES TO REMEMBER—DKG INTERNATIONAL

December 15 Deadline to submit to the *Bulletin: Collegial Exchange*

2019

January 3 Deadline for applications for the DKG Educational Foundation Projects

January 15 Beginning date for DKG Fine Arts Gallery submissions

February 1 Deadline for scholarship applications to DKG International; \$6,000 for master's, \$10,000 for doctor's

February 1 Deadline for applications for Lucile Cornet Individual Professional Development Awards (other deadlines: May 1 and September 1)

February 15 Deadline for DKG Fine Arts Gallery submissions

March 1 Deadline to submit to the *Bulletin: Journal*

May 1 Deadline for applications for Lucile Cornet Individual Professional Development Awards (other deadlines: February 1 and September 1)

May 11 DKG's Founders Day (DKG will be 90!)

May 15 Deadline to submit to the *Bulletin: Journal*

June 21-24 Leading Effective Meetings Seminar, Crowne Plaza, Asheville

June 27-29 International Conference – Arts and Humanities, Crowne Plaza, Asheville

2020

July 7-11 DKG International Convention, Philadelphia, Pennsylvania

DATES TO REMEMBER—ETA STATE NC

November 15 Deadline for nominations for Eta State NC Officers for the 2019-2021 biennium

December 1 Deadline for amendments to the *Eta State Bylaws* and/or the *Eta State Standing Rules*

2019

January 10 Deadline to submit to the *Eta State News*

February 1 Deadline for scholarship applications to Eta State NC; \$1,000 for master's, \$4,000 for doctor's

February 1 Deadline for Founders Award nomination

March 1 Deadline to submit Chapter Achievement form, Rising Star and Golden Key nominations and Communications Excellence form

March 22-23 Leadership Development Seminar, Asheboro

April 10 Deadline to submit to the *Eta State News*

May 3-5 Eta State NC Convention, Crowne Plaza Hickory, Hickory, NC (Region X)

2020

May 1-3 Eta State NC Convention, Embassy Suites Hotel, Greensboro, NC (Region VII)

DATES TO REMEMBER—GAMMA CHI CHAPTER

December 6 **2nd Gamma Chi Meeting**, Norlina United Methodist Church, Norlina (Norlina Group hostesses)

2019

January 18 Deadline for scholarship applications to Gamma Chi; also, deadline for grant-in-aid applications to Gamma Chi

February 11 Deadline to submit to the *Gamma Chi Newsletter*

March 7 **3rd Gamma Chi Meeting**, Littleton Baptist Church, Littleton (Littleton Group hostesses)

March 1 Our Chapter Achievement Form is due to Terry Anne Denny, our regional director for Region III

April 8 Deadline to submit to the *Gamma Chi Newsletter*

May 7 **4th Gamma Chi Meeting**, St. Paul's Lutheran Church, Ridgeway (St. Paul's Group hostesses)

May 7 Gamma Chi's Founders Day (We will be 36!)

Check them out often!

GAMMA CHI WEBSITE:

<http://deltakappagamma.org/NC-gammachi/>

ETA STATE NC WEBSITE:

<http://www.ncdkg.org/>

DKG WEBSITE:

<http://www.dkg.org/>

DKG VISION STATEMENT

Leading Women Educators Impacting Education Worldwide

ETA STATE NC VISION (VIEW)

Voices of Influence Empowering North Carolina Women Educators

Please submit events, celebrations, recognitions and news to: Editor/Webmaster: Nancy Tunstall

Contact: nancytunstall@gmail.com / 252-456-2051 (h)



GAMMA CHI CHAPTER MINUTES – OCTOBER 4, 2018

The Gamma Chi Chapter of The Delta Kappa Gamma Society International met at St. Paul's Lutheran Church in Ridgeway, NC, beginning with a social hour and dinner at 5:45 p.m. The group met in a different location and was led by a different group within the chapter, as the Littleton and Warrenton group switched responsibilities for meetings this year. Newly elected President Evelyn Hall convened the meeting.

Ashley Barnette, recording secretary, gave the attendance report, noting 28 members and one guest. The minutes of the May meeting were approved. Shirley White reviewed the Treasurer's Report, which was emailed to members before the meeting. The Treasurer's Report was received. Aimee Anderson, corresponding secretary, updated the group on correspondences since May. Other members spoke about absent members. Specifically, Harriett Faulkner is sick and Brooke Callahan's Dad is on Hospice Care.

Recognitions followed. President Evelyn Hall recognized members with August, September, and October birthdays. She recognized new retirees – Donna Liles, Diane Collin. Brooke Callahan is our mystery member. Loree Harris has a new grandson. Norma Retzlaff's son who is married to Ginny Bernard's daughter made partner in his business. Jill Coleman has a new granddaughter. Erin Simons will be getting married.

Other reports followed. Ashley Barnette shared a brief report from the Executive Board Meeting minutes. Evelyn Hall shared her experience from the Leadership Management Seminar in Texas. Evelyn encouraged members to invite guests to the December meeting, and reminded members that Terry Anne Denny, our Region III Director, will be the guest speaker at the December meeting.

Committee Reports:

Afghan Committee: Sylvia Alston encouraged members to buy tickets for the afghan raffle. Highest amount every raised on afghans was \$793. At least \$500 is used every year for grants-in-aid. Sylvia Alston's mother continues to make afghans.

Awards Committee: Sylvia Alston presented awards. She reported that the committee decided to no longer use frames for the awards. Member Excellence Awards – Sylvia Alston, Harriet Banzet, Betsy Clark, Debra Clayton, Evelyn Hall, Loree Harris, Mary Catherine Harris, Nancy Tunstall, Shirley White. Service Awards – Mary Austell – 30 Years; Kay Beaver, Connie King – 25 Years; Emmy Lou Coleman – 20 Years; Melanie Burnette, Katy Jones, Chris Skinner – 15 Years; Kristen Boyd, Reagan Ross – 10 Years; Mary Anne Edwards, Tracey Neal – 5 Years. Perfect Attendance Awards – Ashley Barnette, Ginny Bernard, Brooke Callahan, Betsy Clark, Debra Clayton, Diane Colin, Evelyn Hall, Mary Catherine Harris, Danylu Hundley, Norma Retzlaff, Nancy Tunstall, Shirley White. Rookie of the Year Award – Betsy Clark. The Awards Committee recommended that Evelyn Hall be given the Rising Star Award. Vote was taken and award was approved. The Golden Key Award was given to Mary Catherine Harris after vote. Nancy Tunstall was given the Star of the Southeast Award. Evelyn Hall presented her with a card and made a donation in her honor to the International Emergency Fund. Since Brenda Holloman was absent at the May meeting when charter members were recognized, Evelyn Hall recognized her as a charter member of the DKG Gamma Chi Chapter, and all present charter members also stood.

Beginning Teacher's Support Committee: Norma Retzlaff reviewed the committee responsibility. There are currently 39 new hires in Warren County. Bagging the supplies will be on Thursday, November 1st at 3:30 pm at Mariam Boyd Elementary School. Bags will be delivered during the week of November 12- 16, American Education Week.

Communications & Publicity Committee: Nancy Tunstall created a new chapter brochure and encouraged members to use it as a recruitment tool. Nancy made bundles for sharing with each public school, the Warren County Memorial Library, and the new teacher bags.

Membership Committee: Mary Austell welcomed Vivien Windley as a guest from Xi chapter. Mary encouraged members to complete and/or update their biographical sketches. She encouraged members to think of others who would make good members for the chapter. Members can complete prospect cards for potential new members. A request for resignation from Kristin Speakman due to her family situation and having moved away was presented. Membership Committee made the motion, and members voted. Motion carried.

Finance Committee: Debra Clayton reported on the Finance Committee. The Finance Committee brought a motion that the proposed checking and savings budgets be adopted. No second required. No discussion. Motion carried.

Planning Committee: Debra Clayton reviewed the Gamma Chi Strategic Plan for 2018-2020. The Planning Committee brought forth the motion that the chapter adopt the strategic plan. No second required. No discussion. Motion carried.

Scholarship Committee: Betsy Clark reported from the Scholarship Committee that a professional development grant has been awarded to Ashley Barnette for a professional development opportunity.

Shirley White reminded everyone to pay dues.

New Business:

Nancy Tunstall pointed out that the Eta State NC Leadership Development Seminar will be held March 22-23 at Caraway Conference Center. Registration is \$50 plus \$10 for Gallup Strengths Finders Assessment Fee. Nancy Tunstall made a motion that any member that wants to attend be preapproved for a professional development grant. Debra Clayton seconded the motion. No discussion. Motion carried.

No other new business was discussed. The meeting was adjourned and the Warrenton Group led the raffle.

Respectfully Submitted,
Ashley Barnette, Recording Secretary

Active Members Present: Sylvia Alston, Aimee Anderson, Mary Austell, Paula Aycock, Ashley Barnette, Lisa Bender, Ginny Bernard, Crystal Brantley, Melanie Burnette, Shirley Cava, Betsy Clark, Debra Clayton, Elaine Coleman, Gail Coleman, Diane Colin, Sallye Duncan, Evelyn Hall, Loree Harris, Mary Catherine Harris, Brenda Holloman, Katy Jones, Janis Meek, Renee Mizelle, Jenny O'Meara, Norma Retzlaff, Sheila Robertson, Nancy Tunstall and Shirley White.

Active Members Absent: Kay Beaver, Diana Bobbitt, Kristen Boyd, Katrinka Brewer, Brooke Callahan, Jill Coleman, Patricia Hargrove, Danylu Hundley, Laura Kearney, Lynne Lassiter, Donna Liles, Tracey Neal, Martha Ann Overby, Karen Paynter, Trina Paynter, Erin Simons, Chris Skinner and Patricia Williamson.

**Gamma Chi Chapter of The Delta Kappa Gamma Society International
2018-2019 Adjusted Budget for Checking Account**

Checking Account			
Balance Brought Forward July 1, 2018			\$ 1,734.50
Estimated Receipts:			
Dues:			
International	48 @ \$40.00	Active	\$ 1,920.00
	10 @ \$20.00	Reserve	\$ 200.00
State	48 @ \$15.00	Active	\$ 720.00
	10 @ \$2.00	Reserve	\$ 20.00
Chapter	48 @ \$30.00	Active	\$ 1,440.00
	10 @ \$18.00	Reserve	\$ 180.00
Induction Fees	5 @ \$10.00		\$ 50.00
Pins and Ribbons	5 @ \$27.00		\$ 135.00
World Fellowship and other International Funds			\$ 125.00
Eta State Funds			\$ 30.00
NC DKG Educational foundation			\$ 100.00
Schools for Africa			\$ 100.00
Meetings Raffles (4 @ \$50.00)			\$ 200.00
Total Estimated Receipts			\$ 5,220.00
Total Available for Budgeting			\$ 6,954.50
Estimated Expenses:			
Dues and Fees			
Dues:			
International	48 @ \$40.00	Active	\$ 1,920.00
	10 @ \$20.00	Reserve	\$ 200.00
State	48 @ \$15.00	Active	\$ 720.00
	10 @ \$2.00	Reserve	\$ 20.00
Eta State Scholarship Fees	58 @ \$0.20		\$ 11.60
Gamma Chi Scholarship Fees	58 @ \$0.80		\$ 46.40
Induction fees	5 @ \$2.50		\$ 12.50
Total Dues and Fees Disbursed			\$ 2,930.50
Operating Expenses:			
President's Expenses: Conventions, Workshops			\$ 800.00
Webspace Rental for One Year			\$ 36.00
Total Operating Expenses			\$ 836.00
Meeting Expenses:			
Induction (Dinner, Roses)			\$ 110.00
Pins, Ribbons and Inductees' Fees (Recouped by initiates)			\$ 185.00
Memorial Service (Meals for family members)			\$ 60.00
Gifts and Flowers			\$ 200.00
Stationery and Supplies			\$ 75.00
Postage			\$ 50.00
Total Meeting Expenses			\$ 680.00
Special Expenses			
Memorial Expenses (\$50 transferred to Scholarship Fund; Bud Vase to homes)			\$ 75.00
Brochures			\$ 220.95
Total Special Expenses			\$ 295.95
Contributions:			
State Funds - Headquarters - 58 @ \$3.00; Eta State Scholarship (\$15); Leadership Fund (\$15); NC DKG Educational Foundation (\$100) (Last three recouped by members)			\$ 304.00
International Funds - World Fellowship (\$100); Other International fund (\$25); (recouped by members)			\$ 125.00
Warren Education Fund			\$ 100.00
Total Contributions			\$ 529.00
Special Projects			
Warren County Memorial Library (recouped by raffle)			\$ 50.00
Littleton Library (recouped by raffle)			\$ 50.00
New Teacher Bag Project			\$ 100.00
American Cancer Society (Relay for Life)			\$ 50.00
Schools for Africa (Literacy) (recouped by members)			\$ 100.00
Recognitions (Pins for Member Excellence, Pins for Milestones, Perfect Attendance Pins, Birthday Gifts, etc.)			\$ 300.00
Advertisement in 2019 Eta State NC Convention Program			\$ 150.00
Total Special Projects			\$ 800.00
Total Estimated Expenses			\$ 6,071.45
Estimated Balance June 30, 2019			\$ 883.05

Budget is based on \$85.00 per Active Member, \$40.00 per Reserve Member and \$10.00 per Inductee



INTERNATIONAL SOCIETY FOR KEY WOMEN EDUCATORS

DELTA KAPPA GAMMA

GAMMA CHI CHAPTER

Scholarship & Grant-in-Aid Contribution Form

In Memory of:

In Honor of:

Please send acknowledgement to:

Name

Address

City, State, Zip

Lovingly given by:

Name

Address

City, State, Zip

Please make check payable to **Gamma Chi Chapter**
and give or mail to:

Shirley White, Treasurer
1957 US Hwy 1 North
Norlina, NC 27563

DKG Prospect Card

Name _____

Address _____

Email _____

Employer _____

Position _____

Phone _____

Sponsor _____

DKG Prospect Card

Name _____

Address _____

Email _____

Employer _____

Position _____

Phone _____

Sponsor _____



INTERNATIONAL SOCIETY FOR KEY WOMEN EDUCATORS
DELTA KAPPA GAMMA

GAMMA CHI CHAPTER
SCHOLARSHIP APPLICATION FORM

INFORMATION:

1. A \$500 award will be given for use towards tuition or books. The check will be mailed directly to the institution that the recipient will be attending.
2. Applicant ***must be*** a member of the Gamma Chi Chapter pursuing a graduate degree in the field of education.
3. Application deadline is **Friday, January 18, 2019**.
4. This scholarship is renewable each year that the recipient is actively pursuing a graduate degree in education, but *recipient must re-apply each year*.
5. Application should be turned in, mailed or e-mailed to:
Betsy Clark, Scholarship Chair
129 Vaughan Gin Rd
Macon, NC 27551-8987
252-586-4585 (h) or 252-204-1820 (c)
vellabc@embarqmail.com
6. To receive the award, the recipient ***must provide*** her letter of acceptance, her student ID# and address of institution she is attending no later than **April 25, 2019** to Shirley White, Treasurer, 1957 US Hwy 1 N, Norlina, NC 27563.
7. A recipient ***is expected to attend*** the Gamma Chi meeting on **May 7, 2019** to receive her award and have her picture taken for publication.

APPLICATION:

1. Personal Data:

Name of Applicant _____

Address _____

Telephone _____ e-mail _____

2. Why do you want to pursue a graduate degree (use a separate paper, if necessary)?

3. How will this \$500 scholarship be beneficial to you?

4. List activities.

a. Professional

b. Community

5. List honors.

a. Professional

b. Community

6. List two references (one reference must be an educator):

Name _____

Address _____

Telephone _____

Name _____

Address _____

Telephone _____

Signature of Applicant: _____

Date _____



INTERNATIONAL SOCIETY FOR KEY WOMEN EDUCATORS
DELTA KAPPA GAMMA

GAMMA CHI CHAPTER

GRANT-IN-AID APPLICATION FORM

INFORMATION:

1. A \$500 award will be given for use towards tuition or books. The check will be mailed directly to the institution that the recipient will be attending.
2. Applicant ***must be*** a female who is graduating high school, an enrolled college student, or a non-certified employee of Warren County Schools desiring or working toward a degree in education.
3. Application deadline is **Friday, January 18, 2019**.
4. This grant-in-aid is renewable each year that the recipient is actively pursuing a degree in education, but *recipient must re-apply each year*.
5. Applicant must be a resident of Warren County or a non-certified employee of Warren County Schools.
6. Application should be mailed or e-mailed to:
 Betsy Clark, Scholarship Chair
 129 Vaughan Gin Rd
 Macon, NC 27551-8987
 252-586-4585 (h) or 252-204-1820 (c)
 vellabc@embarqmail.com
7. To receive the award, the recipient ***must provide*** her letter of acceptance, her student ID# and address of institution she is attending no later than **April 25, 2019** to Shirley White, Treasurer, 1957 US Hwy 1 N, Norlina, NC 27563.
8. A recipient ***is expected to attend*** the Gamma Chi meeting on **May 7, 2019** to receive her award and have her picture taken for publication. She will also be treated to dinner.
9. After receiving your award, we request that you update us on your progress at the end of your school year.

APPLICATION:

3. Personal Data:

Name of Applicant _____

Address _____

Telephone _____ e-mail _____

Status (check one): ___ Graduating High School Student
 ___ College Student
 ___ Other (describe) _____

If you are a graduating high school student, check academic standing in class:
___ Upper quarter ___ Second Quarter ___ Third Quarter ___ Fourth Quarter

4. Complete a typed response on a separate paper. In a well-organized paragraph or essay, relate details that have led you to pursue a career in education. Include personal experiences, people who have been influential in your making of this decision, your specific goals as you pursue your studies and career path, and any other details that express your determination to become an educator.

3. How will this \$500 be beneficial in your pursuit of a degree in education?

7. List activities.

a. Professional

b. Community

8. List honors.

a. Professional

b. Community

9. List two references (one must be an educator):

Name _____

Address _____

Telephone _____

Name _____

Address _____

Telephone _____

Signature of Applicant: _____

Date _____



**WARREN COUNTY
DEPARTMENT OF SOCIAL SERVICES**
307 North Main Street
Warrenton, NC 27589
(252) 257-5000

Fax: (252)257-1677
(252)257-5610

Ryan D. Whitson, Director
(252)257-5000 EX 5032

October 19, 2018

Greetings from the Warren County Department of Social Services!

Our Child Protective Services Unit, serve children of Abuse and Neglect who are often forgotten during Christmas. Our Angle Tree program is designed for workers to identify needed families who have come to our attention during the year. These are the children and families we referred to receive Christmas gifts. Our goal is to ensure every family who cannot afford Christmas for their child/children, have a toy or gift of some kind. We strive to make each child's Christmas as joyful and memorable as possible. We greatly appreciated all gift cards, monetary funds, toys, hats, coats and gloves that can be donated. We work with the entire family and therefore, is able to accept donations for all ages including adults.

Thank you for your consideration, dedication and participation in the past. We appreciate your continued support. We will be accepting donations now through December 14, 2018.

If you have questions or need further information in order to honor this request, I may be reached at 252-257 5007.

Sincerely,

A handwritten signature in black ink, appearing to read "Dianna H. Talley".

Dianna H. Talley,
Child Welfare Supervisor
Warren County Department of Social Services

GAMMA CHI NOTE: Gifts may be wrapped or unwrapped. If wrapped, please state age and sex. Gifts for older children are really needed—most people choose the younger children. Walmart gift cards are accepted or any gift card. Any donations brought to the meeting will be delivered to Social Services.

Thanks!